

il pavimento stampato

Stamped concrete floor

Béton imprimé





**Perché scegliere
un pavimento
stampato?**



Estremamente resistente e carrabile, non teme il passare del tempo ed il transito di mezzi pesanti.
Antimuffa e antimacchia, perché non ha punti deboli in cui l'acqua possa infiltrarsi.
Le sue texture antiscivolo lo rendono ideale per piazzali, piste ciclabili, marciapiedi e aree pedonali.

Why choose a Stamped Concrete floor?

Highly resistant and suitable for vehicle traffic, it is not scared of time and heavy machinery traffic.
Mold and stain proof, because it doesn't have weak spots where water may infiltrate.
Its antislip texture makes it ideal for squares, bike lanes, sidewalks and pedestrian areas.

Pourquoi choisir un sol en Béton Imprimé?

Extrêmement résistant et durable, il ne craint pas le passage du temps et de véhicules lourds.
Anti-moisissures et antitaches, car dépourvu de points faibles où l'eau peut s'infiltrer.
Sa texture antidérapante le rend idéal pour les places, les pistes cyclables, les trottoirs et les zones piétonnes.



I_ Travertino 3 lastre **E**_ Travertino 3 slabs.
Plam Hardening: Dark Gray_ Plam Rele: Incolore.

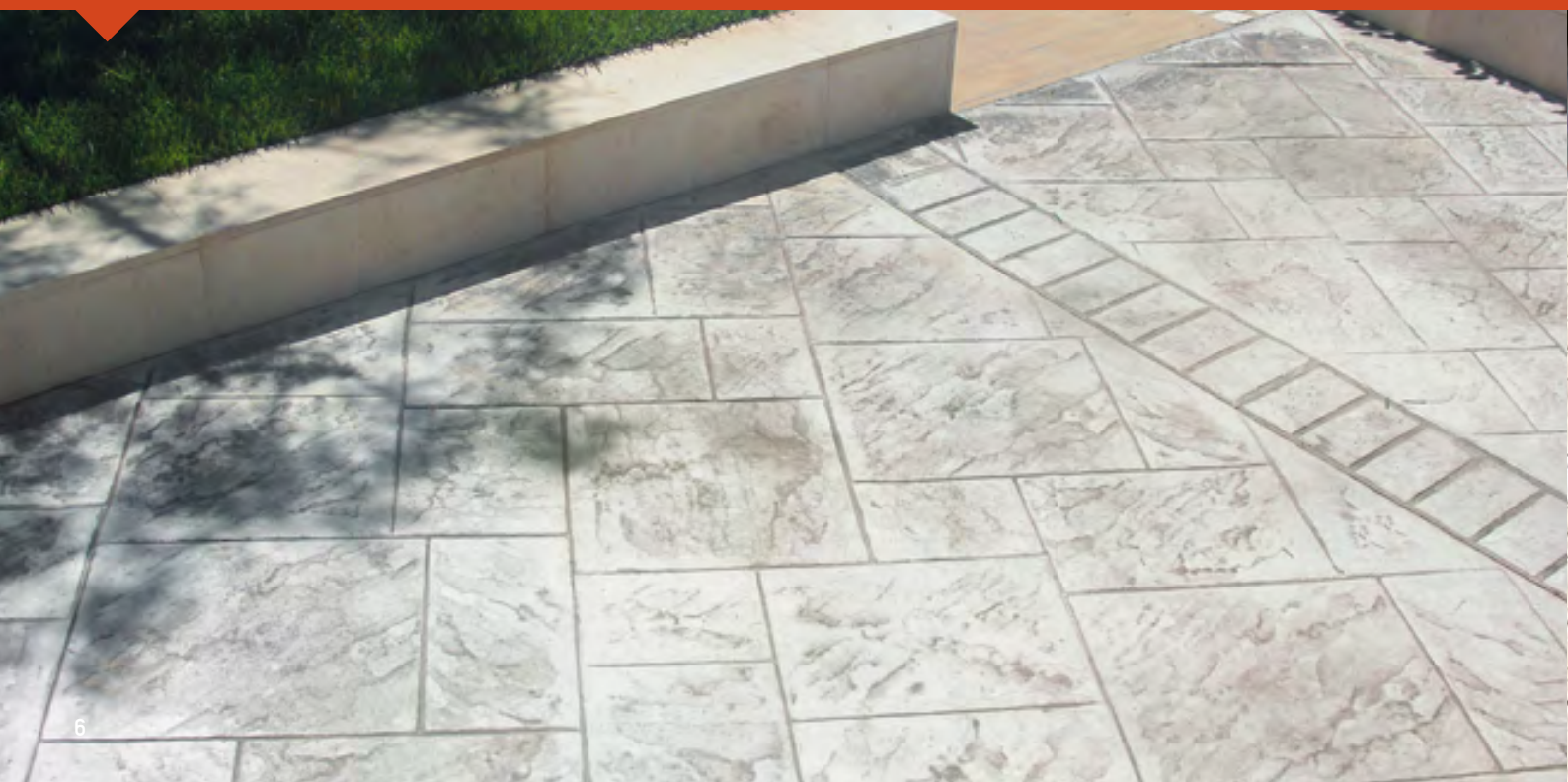


I_ Pietra di fiume E_F_ River stone.
Plam Hardening: White_ Plam Rele: Pale Orange.





Plam Hardening: Silver_Plam Rele: Medium Gray.
I_Pietra Mista Grande E_F_Grand Ashlar Pierre.
Plam Hardening: Light Gray_Plam Rele: Medium Gray.





I_E_F_ Rough Stone
Plam Hardening: White_Plam Rele: Medium Gray.

I_E_F_ Travertino
Plam Hardening: White_Plam Rele: Antique Rose.





I Pietra Sillar Sella **E_F** Sillar Sella Stone.
Plam Hardening: White_Plam Rele: Medium Gray.

I Egeo e Fascia Mattone Verticale **E_F** Egeo, Vertical Border Brick.
Plam Hardening: Yellow Sun_Plam Rele: Clay
Plam Acid: Ambra, Topazio, Bronzo.

Isoplam® dal 2016 è azienda con sistema di Gestione Qualità Certificato UNI EN ISO 9001:2015 che garantisce il rispetto di rigidi criteri di sicurezza, rispetto per l'ambiente e affidabilità. Tutte le materie prime e i prodotti Isoplam® sono marcati CE, in conformità ai criteri generali per la sicurezza stabiliti dalle direttive dell'Unione Europea e recepite in leggi dai singoli stati membri. Il meticoloso controllo effettuato dal laboratorio interno su ogni singolo lotto di produzione garantisce la migliore qualità dei prodotti Isoplam® e l'esclusivo packaging in sacco ermetico li mantiene inalterati nel tempo, proteggendoli dagli agenti esterni. **Il risultato finale è coperto da assicurazione e garanzia solo ed esclusivamente con l'uso di tutti i prodotti a marchio Isoplam®.**

EN

Isoplam® has received the UNI ISO 9001:2015 certification in 2016, which guarantees its compliance to the strict environmental and reliability safety criteria. All raw materials and Isoplam® products are labeled CE. The internal lab guarantees the best quality of Isoplam® products and the exclusive packaging in sealed pails preserves the product. **The final result is covered by insurance and warranty only if Isoplam® products are used entirely for the application.**

FR

Isoplam® est certifié UNI EN ISO 9001:2015 depuis 2016, pour la sécurité, respect de l'environnement et fiabilité. Tous les produits sont marqués CE et contrôlés par le laboratoire interne sur chaque lot de production. L'emballage hermétique assure la qualité. **Le résultat final est couvert par l'assurance et la garantie, uniquement et exclusivement en utilisant tous les produits de la gamme Isoplam®.**





I_ Roccia Antica Gigante E_F_ Antique Stone.
Plam Hardening: White_Plam Rele: Tawny.



I_ Porfido Sampietrino E_F_ European Fan.
I_ Rosone Sampietrino E_F_ Radius Medallion.
Plam Hardening: Oak_Plam Rele: Autumn Brown.
Plam Acid: Marrone.

I_ Mattone del Nord E_F_ Northern Stone.
Plam Hardening: Dark Gray_Plam Rele: Carbon Black.





I_ Pietra Mista Grande e Mattone Verticale
E_ F_ Large Ashlar Stone - Vertical Border Brick.
Plam Hardening: Silver_Plam Rele: Medium Gray.

I_ Pietra Mista Grande E_ Large Ashlar Stone F_ Grand Ashlar Pierre.
Plam Hardening: Medium Gray_Plam Rele: Medium Gray.





I Rough Stone - Rosa dei Venti **E_F** Rough Stone - Windrose.
 Plam Hardening: White_Plam Rele: Antique Rose.
 Plam Acid: Nero Caffè, Sabbia.



I Roccia Antica Gigante - Mattone Verticale.
E_F Antique Stone - Vertical Border Brick.
 Plam Hardening: White_Plam Rele: Autumn Brown.



I Lastricato Medievale - Travertino.
E_F Medieval Stone - Travertino.
 Plam Hardening: White_Plam Rele: Tile Red.

Abaco

I colori sono da ritenersi indicativi.

The colors are indicative.

Les couleurs sont indicatives.



Appalachian

Plam Hardening: Silver

Plam Rele: Medium Gray



Cedar Wood Planking

Plam Hardening: Havana

Plam Rele: Dark Gray



Edimburg Cobble

Plam Hardening: Medium Gray

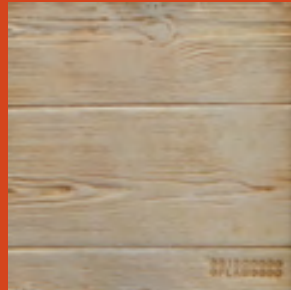
Plam Rele: Medium Gray



Lastricato Medievale

Plam Hardening: Mauve

Plam Rele: Autumn Brown



Legno

Plam Hardening: White

Plam Rele: Tawny



Mattone del Nord

Plam Hardening: Medium Gray

Plam Rele: Medium Gray



Mattone Vecchio

Plam Hardening: Tile Red

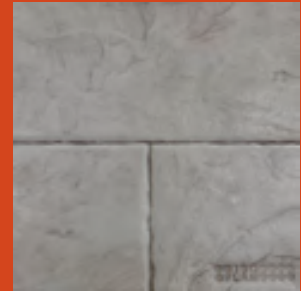
Plam Rele: Dark Gray



Onda

Plam Hardening: Silver

Plam Rele: Dark Gray



Pietra Mista Grande

Plam Hardening: Silver

Plam Rele: Light Gray



Pietra Mista Piccola

Plam Hardening: Antique Rose

Plam Rele: Dark Gray



Pietra Mista Piccola

Plam Hardening: Turtledove

Plam Rele: Medium Gray



Pietra Spaccata

Plam Hardening: Silver

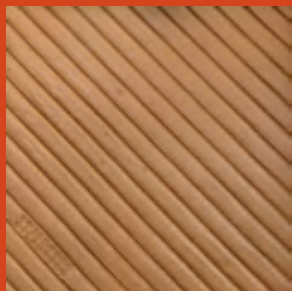
Plam Rele: Dark Gray

Abaco

I colori sono da ritenersi indicativi.

The colors are indicative.

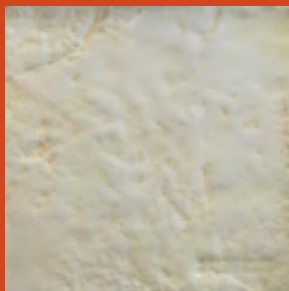
Les couleurs sont indicatives.



Rampa

Plam Hardening: Clay

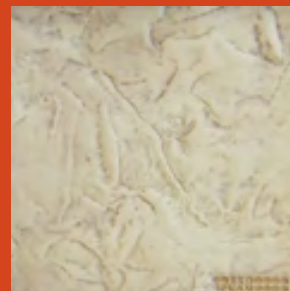
Plam Rele: Incolore



Roccia Antica Gigante

Plam Hardening: White

Plam Rele: Pale Orange



Roman Slate

Plam Hardening: Ocra Sardegna

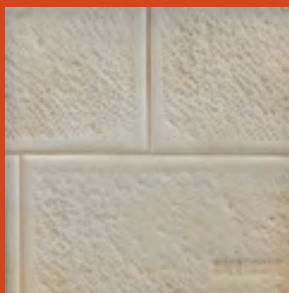
Plam Rele: Light Gray



Sampietrino

Plam Hardening: Dark Gray

Plam Rele: Medium Gray



Travertino

Plam Hardening: White

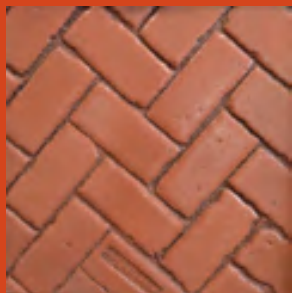
Plam Rele: Antique Rose



Sasso Irregolare

Plam Hardening: Yellow Sun

Plam Rele: Clay



Spina Pesce Piccolo

Plam Hardening: Red Mountain

Plam Rele: Dark Gray



Pietra Mista Grande

Plam Hardening: White

Plam Rele: Pale Orange



Sasso Irregolare Grande

Plam Hardening: Silver

Plam Rele: Dark Gray



Rosa dei venti - Windrose

Plam Hardening: Light Gray

Plam Rele: Light Gray

Plam Sealing Color



Greca Tile

Plam Hardening: Light Gray

Plam Rele: Light Gray

Plam Acid: Sabbia



Sole - Sun

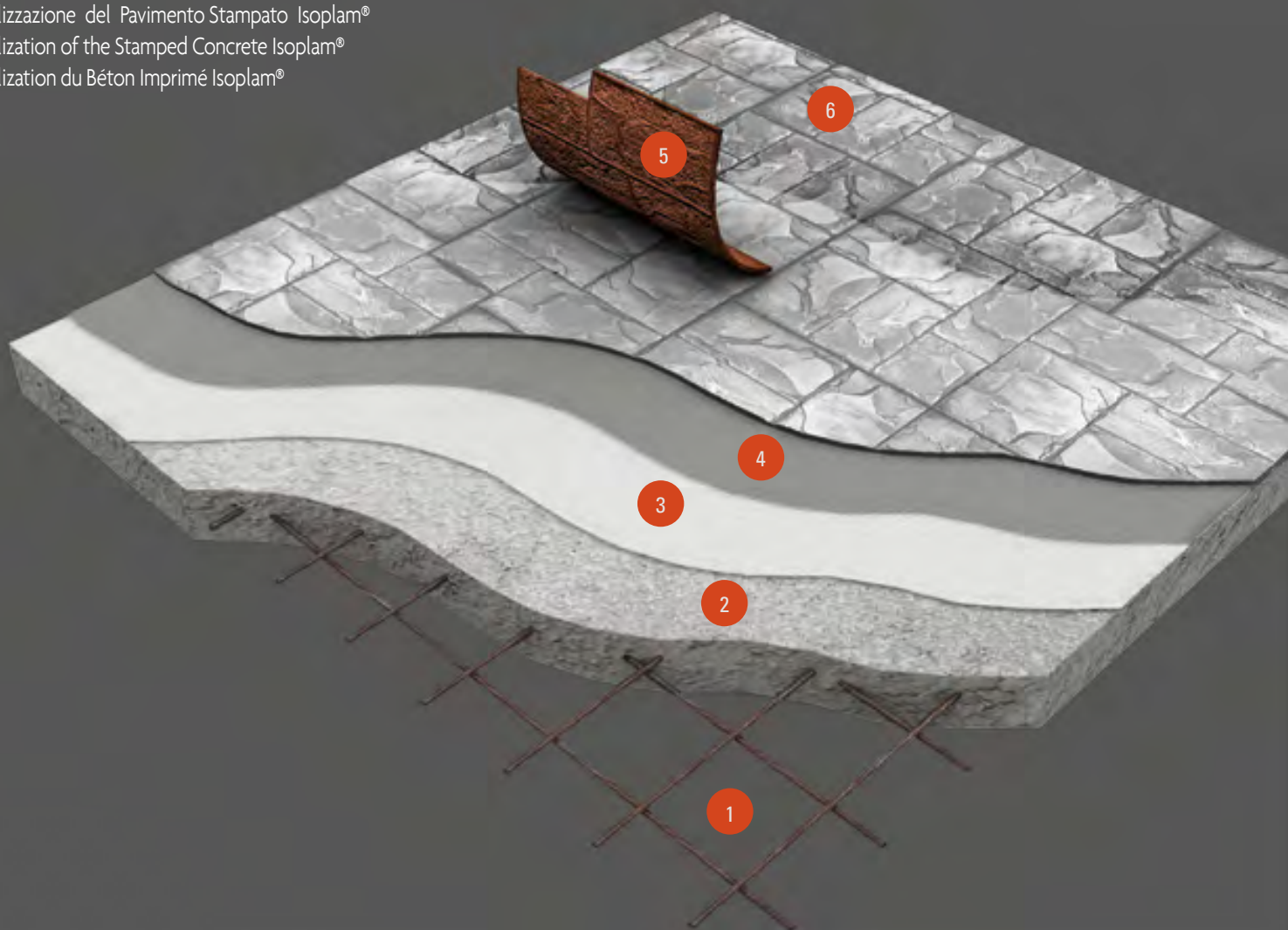
Plam Hardening: White

Plam Rele: Antique Rose

Plam Acid: Ambra

il pavimento stampato

Realizzazione del Pavimento Stampato Isoplam®
Realization of the Stamped Concrete Isoplam®
Réalization du Béton Imprimé Isoplam®



IT

1. Casseratura e posa rete elettrosaldata.
2. Stesura del calcestruzzo additivato con HOTPAV oppure COLDPAV e con PLAM FIBRE Isoplam®.
3. Applicazione del corazzante PLAM HARDENING colorato in 2 o 3 applicazioni e lisciatura della superficie.
4. Applicazione del distaccante PLAM RELE colorato.
5. Stampaggio e rifinitura con attrezzi Isoplam® e lavaggio della pavimentazione con detersivi e specifiche attrezzature Isoplam®.
6. Applicazione della resina PLAM SEALING/L o PLAM SEALING/S.

EN

1. Formwork setting and placement of steel reinforcement.
2. Concrete pose with HOTPAV or with COLDPAV and with PLAM FIBRE Isoplam®.
3. Application of colored PLAM HARDENING in 2 or 3 applications and smoothing of the surface.
4. Application of the colored releasing agent PLAM RELE.
5. Imprinting and finishing using Isoplam® tools and cleansing of the floor with Isoplam® detergents and equipments.
6. Application of protective PLAM SEALING/L or PLAM SEALING/S.

FR

1. Définition du coffrage et placement de l'armature en acier.
2. Pose du béton avec HOTPAV ou avec COLDPAV et avec PLAM FIBRE Isoplam®.
3. Mise en application du couleur PLAM HARDENING en 2 ou 3 applications et lissage de le surface.
4. Application de l'agent démoulant coloré PLAM RELE.
5. Moulage et finition avec les outils Isoplam® et nettoyage du sol avec les détergents et équipements spéciaux Isoplam®.
6. Application de la résine PLAM SEALING/L or PLAM SEALING/S.

check list

Prodotti per Pavimento Stampato Isoplam®
Products for Stamped Concrete floor Isoplam®
Produits pour Béton Imprimé Isoplam®



Hotpav / Coldpav

Additivo superfluidificante per calcestruzzo versione estiva o invernale.
Superplasticiser additive for concrete floors, for summer or winter season.
Adjuvant superfluidifiant pour béton, version été ou hiver.



Plam Rele

Distaccante in polvere per pavimenti in cemento stampato.
Powder release agent for stamped concrete floors.
Démoulant coloré en poudre pour revêtements en béton imprimé.



Plam fibre

Fibre in PVC per calcestruzzo.
PVC fibers for concrete floors.
Fibres en PVC pour béton.



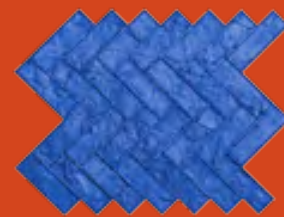
Plam Sealing/L - Plam Sealing/S

Resina protettiva trasparente acrilica monocomponente.
Protective sealer for stamped concrete.
Résine de protection pour béton imprimé.



Plam Hardening

Corazzante colorato per pavimenti in cemento stampato Isoplam®.
Color hardener for Isoplam® stamped concrete floors.
Durcisseur colorant pour béton imprimé Isoplam®.



Stampi Isoplam®

Stampi, greche e rosoni per cemento stampato Isoplam®.
Floor texture mats, borders and medallion for stamped concrete.
Matrices, frises et rosaces pour béton imprimé.

I_ Distribuito da:
E_ Delivered by:
F_ Distribu  par:

rev. 10-2016



Isoplam srl

Via Enrico Mattei, 4
31010 Maser (TV) Italy
Tel. +39 0423 925023
Fax +39 0423 926119

info@isoplam.it
www.isoplam.it

